



GLOBAL LUXURY

1206 PAYNE DRIVE

LOS ALTOS

PROPERTY SQ FT INFORMATION

LIVING SPACE: 1941 SQ FT

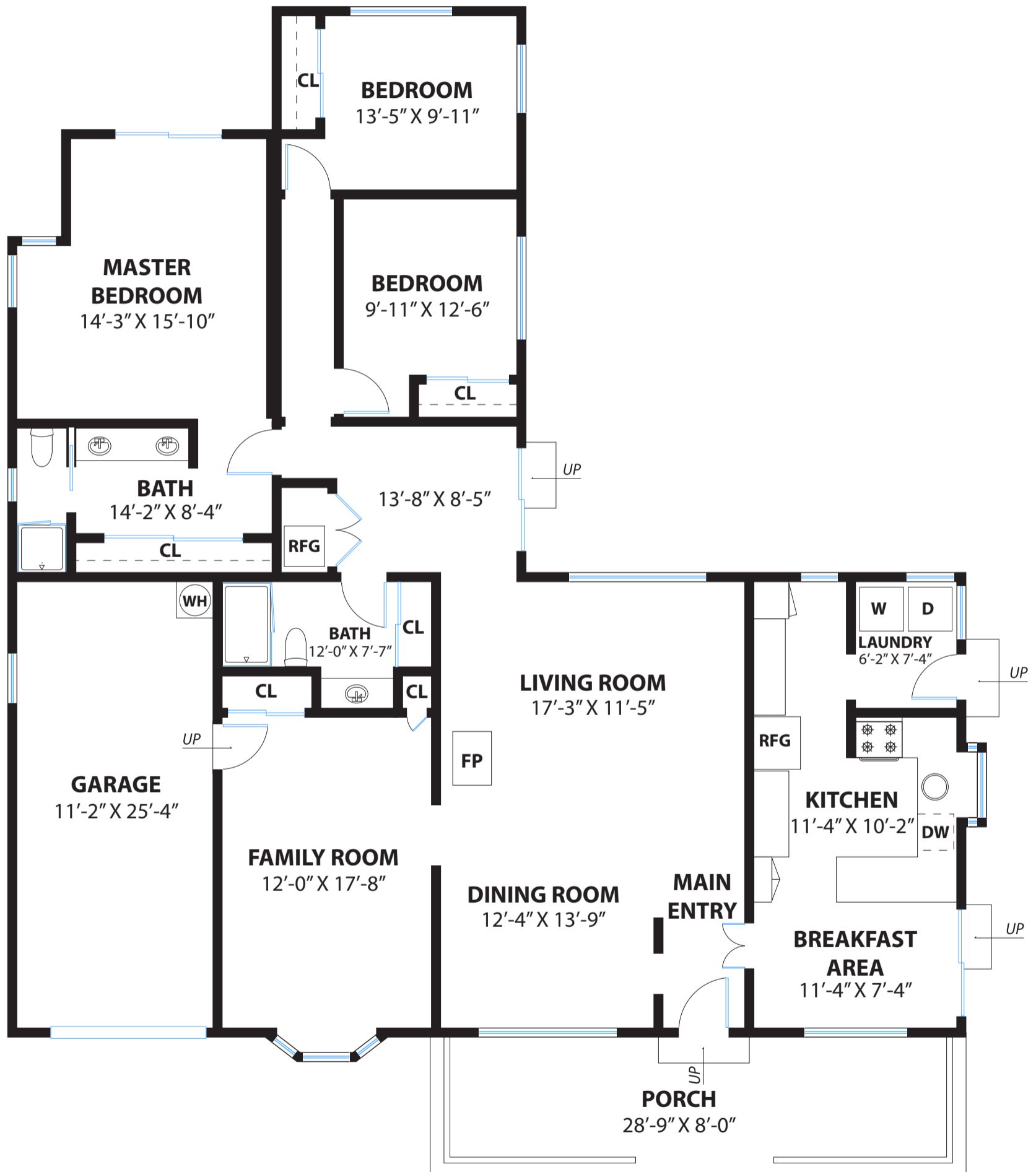
* Main House: 1941 Sq Ft

NON-LIVING SPACE: 545 SQ FT

* Patio: 245 Sq Ft

* Garage: 300 Sq Ft

COMBINED: 2486 Sq Ft



PRESENTED BY : FLING YANG & ASSOCIATES

DRE# 01818062 | 01991572 | 01908304

DISCLAIMER: RENDERING BY OPEN HOMES PHOTOGRAPHY. ALL MEASUREMENTS ARE APPROXIMATE AND MAY NOT BE EXACT. DO NOT RELY ON THE ACCURACY OF THIS FLOOR PLAN WHEN DETERMINING THE PRICE OF A PROPERTY OR MAKING DECISIONS REGARDING BUYING OR SELLING OF PROPERTIES WITHOUT INDEPENDENT VERIFICATION.



GLOBAL
LUXURY

1206 PAYNE DRIVE

LOS ALTOS

PROPERTY SQ FT INFORMATION

LIVING SPACE: 1941 SQ FT

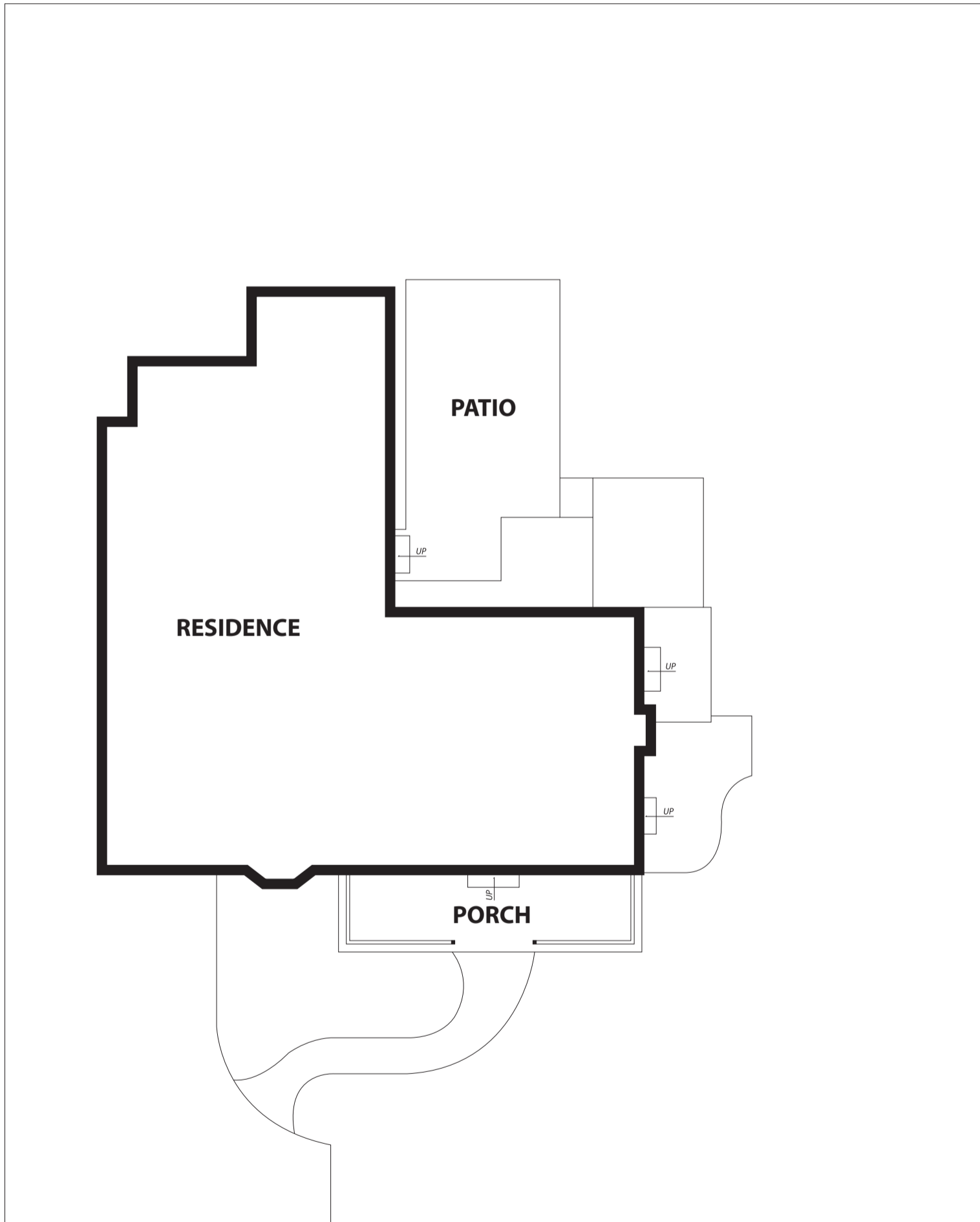
* Main House: 1941 Sq Ft

NON-LIVING SPACE: 545 SQ FT

* Patio: 245 Sq Ft

* Garage: 300 Sq Ft

COMBINED: 2486 Sq Ft



PRESENTED BY : FLING YANG & ASSOCIATES

DRE# 01818062 | 01991572 | 01908304

DISCLAIMER: RENDERING BY OPEN HOMES PHOTOGRAPHY. ALL MEASUREMENTS ARE APPROXIMATE AND MAY NOT BE EXACT.
DO NOT RELY ON THE ACCURACY OF THIS FLOOR PLAN WHEN DETERMINING THE PRICE OF A PROPERTY OR MAKING DECISIONS
REGARDING BUYING OR SELLING OF PROPERTIES WITHOUT INDEPENDENT VERIFICATION.